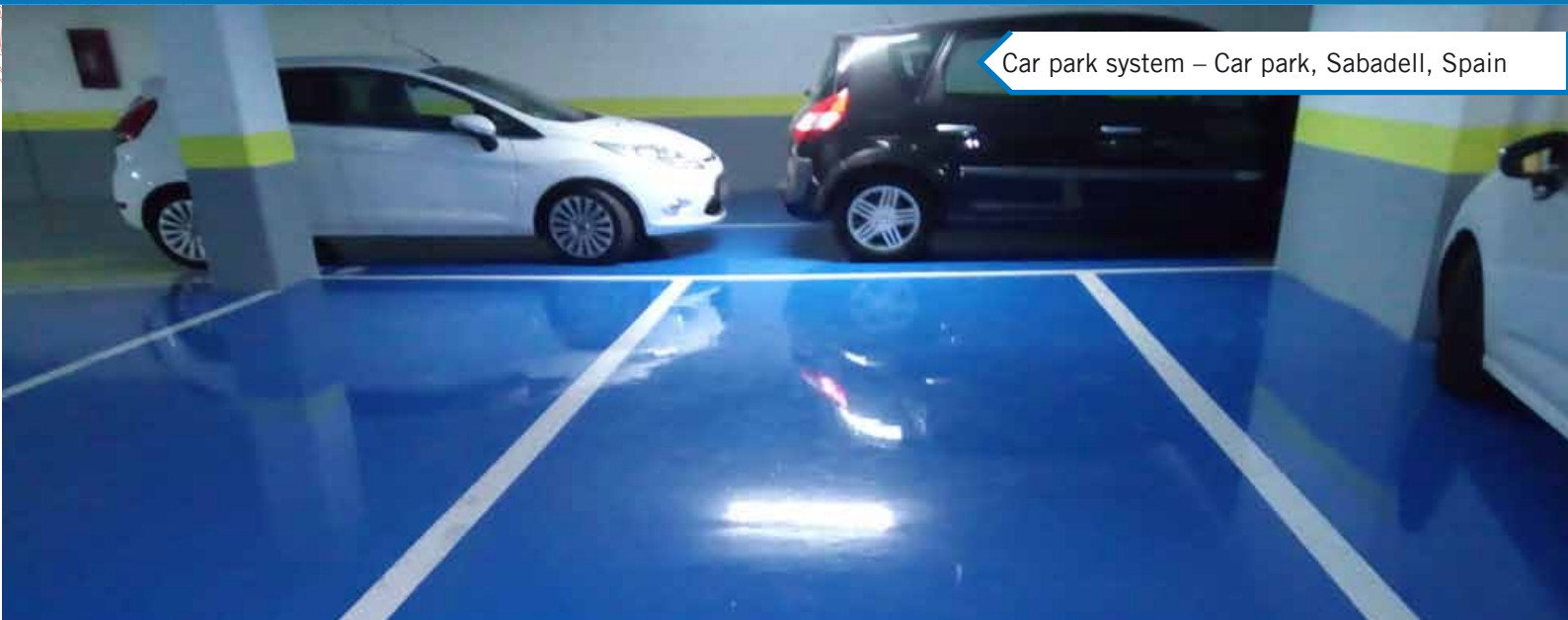


Car park system – Car park, Sabadell, Spain



BASIC INFORMATION

Car parks are usually subjected to heavy traffic. This one in Sabadell had ended up completely worn out through the years and needed a refurbishment.

As a protection coating for the future, the epoxy paint EP Coat 100 was used for this job. This resistant coating gives an optimal protection against heavy traffic.

ABOUT THE JOB

Support: Self-leveling mortar

Main Coat: EP Coat 100

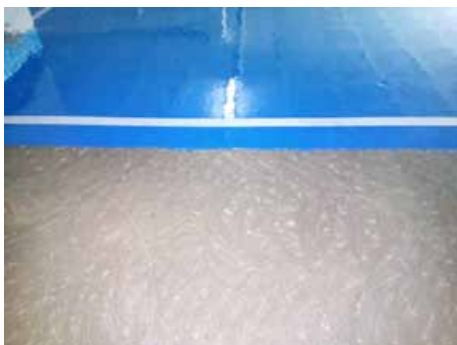
Type of application: Cold-applied

Top Coat: Colodur Eco

WORK STAGES

1. Support preparation

To assure the adherence of the system to the support, a proper surface treatment is elementary. In the case of the car park in Sabadell, a self-leveling mortar was applied before the primer, and was grinded to avoid remains of grout.



2. Primer

Krypton Chemical's Humidity Primer is a suitable solution for supports with remaining moisture. It's especially useful if a polyurethane resin needs to be applied on top

3. EP Coat 100

As a main layer EP Coat 100 was used. This epoxy resin gives high resistance to the flooring system and is therefore an ideal solution for car parks. In this case two layers of 200g/m² were applied.

4. Top Coat

Colodur Eco is an aliphatic polyurethane resin, which offers hard but flexible coatings. It has a very high abrasion resistance, which makes it a suitable product for floors where an intense wear protection is required. For that reason, the signaling lines on the floor were painted with Colodur Eco.



SHORT DESCRIPTION

Place: Car park, Sabadell, Spain.

Surface: 2000m²

Flooring System: Paint system
EP Coat 100



RAYSTON SYSTEMS BY KRYPTON CHEMICAL:

All RAYSTON SYSTEMS are conceived for professional flooring and waterproofing applications and certified according to their intended uses by independent laboratories from several countries.

